



 **BOARDS AND
SYSTEMS**



ARROW ELECTRONICS, INC.

Embedded Boards and Systems ▶

www.arrownac.com



Intel® Core™ 2 Duo, Quad Core, and Mobile Processor Families

Based on revolutionary Intel® Core™ microarchitecture, the breakthrough Intel® Core™ 2 Duo and Quad processor families are designed to provide powerful energy-efficient performance so designers can do more at once without slowing down. The Intel® Xeon® family delivers the breakthrough performance, energy efficiency, and reliability needed for virtualization and business-critical applications. Finally, Intel® Core™ 2 Duo mobile processors provide twice the multi-tasking performance with improved energy efficiency to enable better battery life so users get the benefit of a powerful dual-core PC plus all the benefits of mobility.



Features ▶

- Intel® Core™ microarchitecture
- Intel® Xeon® processors for entry, mid-level, and enterprise solutions
- Intel® Core™ 2 Duo mobile processors with Centrino technology

Benefits ▶

- Improved multi-tasking, revolutionary speed, and energy efficiency
- Performance and reliability for any application
- World's best mobile processor delivering breakthrough performance and great power savings

Applications ▶

- Digital home—a complete digital media platform for video, music, and images
- Digital office—enhanced security, multi-tasking, performance, and manageability
- Digital health—Intel® quality connecting people and information for better health
- Education and government—world-class reliability for K-12, college, and government solutions
- Custom appliances—point-of-sale, workstations, industrial, and security applications

Product Specifications ▶

Family	OEM Part #	Processor #	Speed	Cache	FSB	Core
Core™ 2 Duo	HH80557PH0362M	E6300	1.86 GHz	2 Mb	1,066	Dual
	HH80557PH0462M	E6400	2.13 GHz	2 Mb	1,066	Dual
	HH80557PH0364M	E6320	1.86 GHz	4 Mb	1,066	Dual
	HH80557PH0464M	E6420	2.13 GHz	4 Mb	1,066	Dual
	HH80557PH0564M	E6600	2.40 GHz	4 Mb	1,066	Dual
	HH80557PH0674M	E6700	2.66 GHz	4 Mb	1,066	Dual
Core™ 2 Quad	HH80562PH0568M	Q6600	2.40 GHz	8 Mb	1,066	Quad
Xeon® UP	HH80557KH0564M	3060	2.40 GHz	4 Mb	1,066	Dual
	HH80557KH0674M	3070	2.66 GHz	4 Mb	1,066	Dual
	HH80562QH0468M	X3210	2.13 GHz	8 Mb	1,066	Quad
	HH80562QH0568M	X3220	2.40 GHz	8 Mb	1,066	Quad
Dual Xeon®	HH80556KJ0534M	5140	2.33 GHz	4 Mb	1,333	Dual
	HH80556KJ0674M	5150	2.66 GHz	4 Mb	1,333	Dual
	HH80556KJ0804M	5160	3.00 GHz	4 Mb	1,333	Dual
	HH80563QJ0418M	E5335	2.00 GHz	8 Mb	1,333	Quad
	HH80563QJ0538M	E5345	2.33 GHz	8 Mb	1,333	Quad
	HH80563KJ0678M	X5355	2.66 GHz	8 Mb	1,333	Quad
Quad Xeon®	LF80550KG0804M	7120M	3.06 GHz	4 Mb	800	Dual
	LF80550KG0888M	7130M	3.20 GHz	8 Mb	800	Dual
	LF80550KG096007	7140M	3.40 GHz	16 Mb	800	Dual
Centrino® Core 2 Duo	LF80537GF0342M	T5600	1.83 GHz	2 Mb	667	Dual
	LF80537GF0414M	T7200	2.00 GHz	4 Mb	667	Dual
	LF80537GF0484M	T7400	2.16 GHz	4 Mb	667	Dual
	LF80537GF0534M	T7600	2.33 GHz	4 Mb	667	Dual



Intel® Desktop Boards

A powerful processor demands a powerful motherboard. Intel® desktop boards are designed to optimize the performance of Intel® processors while delivering reliable next-generation technology, value-added features, and easy integration. Intel® desktop boards are the leader in performance and energy savings, while delivering the highest standard in compatibility to third-party manufacturer add-on products. Intel® desktop boards with Intel® Core™ 2 Duo processors and Intel® Core™ 2 Quad processors are designed to take full advantage of Microsoft Windows Vista Premium.

Features ▶

- Support for the latest Intel® multi-core processors
- Intel® graphics media accelerator (on select motherboards)
- Intel® high-definition audio
- Dual-channel DDR2 SDRAM memory
- Intel® Viiv™ and vPro™ technologies (on select motherboards)

Benefits ▶

- Improved multi-tasking, revolutionary speed, and energy efficiency
- Low-cost onboard graphics solutions for mainstream performance
- Onboard, high-quality, multi-channel audio utilizing dedicated system bandwidth
- Next-generation dual-channel memory performance
- Built-in security and manageability with vPro™, or complete media entertainment with Viiv™

Applications ▶

- Digital home—a complete digital media platform for video, music, and images
- Digital office—enhanced security, multi-tasking, performance, and manageability
- Digital health—Intel® quality, connecting people and information for better health
- Education and government—world-class reliability for K-12, college, and government solutions
- Custom appliances—point-of-sale, workstations, industrial and security applications

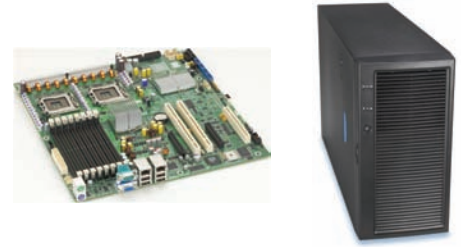
Product Specifications ▶

Type	Part Number	Processor Support	Video	Audio	LAN	Memory	Drive Support	Slot Configuration	Intel® Technology
ATX boards	BLKD975XB2KR	800/1066FSB Dual-/Quad-Core	NA	8-channel Intel® HDA	Single Gb	8 Gb DDR2 667/800 (4)	8 x SATA300 w/RAID	2 PCI/3 PCIe x16	Viiv™
	BLKDG965WHMKR	800/1066FSB Dual-Core	Onboard IGMA X3000	8-channel Intel® HDA	Single Gb	8 Gb DDR2 667/800 (4)	6 x SATA300 w/RAID	3 PCI/3 PCIe x1/1 PCIe x16	Viiv™
	BLKDG965RYCK	800/1066FSB Dual-Core	Onboard IGMA X3000	6-channel Intel® HDA	NA	8 Gb DDR2 667/800 (4)	4 x SATA300	3 PCI/3 PCIe x1/1 PCIe x16	NA
	BLKDP965LTCK	800/1066FSB Dual-Core	NA	6-channel Intel® HDA	NA	8 Gb DDR2 667/800 (4)	4 x SATA300	3 PCI/3 PCIe x1/1 PCIe x16	Viiv™
	BLKDG963FXCK	800/1066FSB Dual-Core	Onboard IGMA 3000	6-channel Intel® HDA	Single Gb	8 Gb DDR2 533/667 (4)	4 x SATA300	3 PCI/3 PCIe x1	NA
Micro-ATX boards	BLKDG9650TMKR	800/1066FSB Dual-Core	Onboard IGMA X3000	8-channel Intel® HDA	Single Gb	8 Gb DDR2 667/800 (4)	6 x SATA300 w/RAID	2 PCI/1 PCIe x1/1 PCIe x16	Viiv™
	BLKDG965GFEKR	800/1066FSB Dual-Core	Onboard IGMA 3000	6-channel Intel® HDA	Single Gb	8 Gb DDR2 667/800 (4)	6 x SATA300 w/RAID	2 PCI/1 PCIe x1/1 PCIe x16	vPRO™
	BLKDG965SSCK	800/1066FSB Dual-Core	Onboard IGMA X3000	6-channel Intel® HDA	NA	8 Gb DDR2 667/800 (4)	4 x SATA300	1 PCI/2 PCIe x1/1 PCIe x16	NA
	BLKDG963GSK	800/1066FSB Dual-Core	Onboard IGMA 3000	6-channel Intel® HDA	Single Gb	8 Gb DDR2 533/667 (4)	4 x SATA300	2 PCI/1 PCIe x1	NA
	BLKD946GZSSL	800/1066FSB Dual-Core	Onboard IGMA 3000	6-channel Intel® HDA	Single 10/100	8 Gb DDR2 533/667 (4)	4 x SATA300	1 PCIe x16	NA
Micro-BTX boards	BLKDG965COEKR	800/1066FSB Dual-Core	Onboard IGMA 3000	6-channel Intel® HDA	Single Gb	8 Gb DDR2 667/800 (4)	6 x SATA300 w/RAID	2 PCI/1 PCIe x1/1 PCIe x16	vPRO™
	BLKDG965MSCK	800/1066FSB Dual-Core	Onboard IGMA X3000	6-channel Intel® HDA	NA	8 Gb DDR2 667/800 (4)	4 x SATA300	1 PCI/2 PCIe x1/1 PCIe x16	NA
	BLKD946GZTSSL	800/1066FSB Dual-Core	Onboard IGMA 3000	6-channel Intel® HDA	Single 10/100	8 Gb DDR2 533/667 (4)	4 x SATA300	1 PCIe x16	NA



Intel® Server Solutions

Intel® server and workstation components deliver new levels of performance. They also bring dependability, compatibility, scalability, and advanced architecture to your multi-processing environment. Intel® server boards are designed with cutting-edge leadership technologies providing customers an exceptional degree of reliability, availability, and serviceability. From component selection to the latest in system architecture, Intel® server boards, chassis, and platforms are designed to provide uninterrupted service—and to meet all our customer’s business needs.



Features ▶

- Onboard SATA and SAS controllers
- Dual-channel DDR2 SDRAM memory
- Intel® Xeon® processor support for entry, mid-level, and enterprise solutions
- Hot-swap redundant components (on select Intel® products)

Benefits ▶

- High-speed scalable storage options
- Next-generation dual-channel memory performance
- Performance, energy efficiency, and reliability for any application
- Quickly upgrade or replace drives and power supplies

Applications ▶

- Digital office
- Digital health
- Education
- Government and military
- Industrial and enterprise

Product Specifications ▶

Type	Part #	Processor Support	Memory	Drive Support	LAN	Video	PCI Configuration
Server mainboards	S3000AHLX	Core 2 and Xeon UP	8 Gb DDR2-533/667 (4)	4-port SATA w/RAID 0,1,10	Dual Gb	Onboard	2 x 32/33, 1 x PCIX 100, 1 x PCIe x4, 1 x PCIe X8
	S5000VSASATA	Dual Xeon® 667-1333FSB	16 Gb DDR2-533/667 (8)	6-port SATA w/ RAID 0,1,10	Dual Gb	Onboard	1 x 32/33, 2 x PCIX 133, 2 x PCIe x4
	S5000VSASAS	Dual Xeon® 667-1333FSB	16 Gb DDR2-533/667 (8)	2-port SATA and 6-port SAS w/RAID 0,1,10	Dual Gb	Onboard	1 x 32/33, 2 x PCIX 133, 2 x PCIe x4
	S5000PSLSATA	Dual Xeon® 667-1333FSB	32 Gb DDR2-533/667 (8)	6-port SATA w/RAID 0,1,10	Dual Gb	Onboard	1 x PCIX 100, 1 x PCIX 133, 2 x PCIe x4, 2 x PCIe X8
	S5000PSLSAS	Dual Xeon® 667-1333FSB	32 Gb DDR2-533/667 (8)	2-port SATA and 4-port SAS w/RAID 0,1,10	Dual Gb	Onboard	1 x PCIX 100, 1 x PCIX 133, 2 x PCIe x4, 2 x PCIe X8
	S5000PAL	Dual Xeon® 667-1333FSB	32 Gb DDR2-533/667 (8)	6-port SATA w/SAS and HW SAS RAID options	Dual Gb	Onboard	2 riser slots w/multiple options based on chassis
Type	Part #	Power Supply	Peripheral Bays	Maximum HDD Support	Riser Support	Boards Supported	
1U server KDK chassis	SR1500NA	Fixed 600W	1 slimline CD/DVD	3 x hot-swap SATA/SAS drives	Full-height and low-profile	S5000PAL board	
	SR1550NA	Single 650W (1+1 redundant optional)	1 slimline CD/DVD	8 x hot-swap SATA/SAS drives	Full-height and low-profile	S5000PAL board	
2U server KDK chassis	SR2500NA	Single 750W (1+1 redundant optional)	1 slimline CD/DVD	6 x hot-swap SATA/SAS drives	Full-height and low-profile	S5000PAL board	
5U server KDK chassis	SC5295UPNA	Fixed 350W	2 x 5.25"/1 x 3.5"	6 x fixed IDE drives	NA	S3000AH boards	
	SC5299BRPNA	Single 650W (1+1 redundant optional)	2 x 5.25"/1 x 3.5"	6 x fixed or hot-swap SATA/SAS drives	NA	S5000VA or S5000PSL boards	
	SC5400LXNA	Single 830W (1+1 redundant optional)	3 x 5.25"/1 x 3.5"	6 or 10 x fixed or hot-swap SATA/SAS drives	NA	S5000PSL boards	
Type	Part #	Processor Support	Maximum Memory	Maximum HDD and Peripheral Support	Onboard Features	Power Supply	PCI Configuration
1U server platforms	SR1530HCLSNA	Dual Xeon® 1066-1333FSB	12 Gb DDR2-667 (6)	6 x hot-swap SAS drives, 1 x 5.25", 1 floppy	Dual Gb LAN and video	Single 600W (1+1 redundant optional)	1 x 32/33, 2 x PCIX 133, 2 x PCIe x4
	SR1500ALNA	Dual Xeon® 667-1333FSB	32 Gb DDR2-533/667 (8)	3 x hot-swap SATA drives, 1 slimline bay	Dual Gb LAN and video	Fixed 600W	1 x FH PCIe x8, 1 x LP PCIe x8
	SR1500ALSASNA	Dual Xeon® 667-1333FSB	32 Gb DDR2-533/667 (8)	3 x hot-swap SAS drives, 1 slimline bay	Dual Gb LAN and video	Fixed 600W	1 x FH PCIe x8, 1 x LP PCIe x8
	SR1550ALNA	Dual Xeon® 667-1333FSB	32 Gb DDR2-533/667 (8)	8 x hot-swap SATA drives, 1 slimline bay	Dual Gb LAN and video	Single 650W (1+1 redundant optional)	1 x FH PCIe x8, 1 x LP PCIe x8
	SR1550ALSASNA	Dual Xeon® 667-1333FSB	32 Gb DDR2-533/667 (8)	8 x hot-swap SAS drives, 1 slimline bay	Dual Gb LAN and video	Single 650W (1+1 redundant optional)	1 x FH PCIe x8, 1 x LP PCIe x8
2U server platforms	SR2520SAXSNA	Dual Xeon® 667-1333FSB	8 Gb DDR2-533/667 (4)	6 x hot-swap SAS drives, 1 x 5.25", 1 floppy	Dual Gb LAN and video	Single 600W (1+1 redundant optional)	1 x 32/33, 2 x PCIX 133, 2 x PCIe x4
	SR2500ALBRPNA	Dual Xeon® 667-1333FSB	32 Gb DDR2-533/667 (8)	6 x hot-swap SATA/SAS drives, 1 slimline bay	Dual Gb LAN and video	Single 750W (1+1 redundant optional)	1 x FH PCI-X 100, 2 x FH PCIe x4, 1 LP PCIe x4
	SR2500ALLXNA	Dual Xeon® 667-1333FSB	32 Gb DDR2-533/667 (8)	6 x hot-swap SATA/SAS drives, 1 slimline bay	Dual Gb LAN and video	Single 750W (1+1 redundant optional)	1 x FH PCI-X 100, 2 x FH PCIe x4, 1 LP PCIe x4
4U server platforms	SHW4URM3SA	Quad Xeon® 667/800FSB	64 Gb DDR2-400 (16)	5 x hot-swap SAS drives, 1 x 5.25", DVD-ROM	Dual Gb LAN and video	Dual 1,470W 1+1 redundant	1 x PCIX 100, 1 x PCIX 133, 2 x PCIe x4, 2 x PCIe X8
6U server platforms	SHW6URM3SA	Quad Xeon® 667/800FSB	64 Gb DDR2-400 (16)	10 x hot-swap SAS drives, 2 x 5.25", DVD-ROM	Dual Gb LAN and video	Single 1,570W (1+1 redundant optional)	1 x PCIX 100, 1 x PCIX 133, 2 x PCIe x4, 2 x PCIe X8



Intel® Telecom Platforms and Network Security Servers

Intel's high-performance telecom platform building blocks, based on industry standards and NEBS-3/ETSI certified, are designed to enable ecosystem suppliers to deliver compelling telecom solutions, and offer a choice of operating systems and middleware. All Intel® telecom platforms feature robust server management, high availability, and an extended life cycle for superior customer investment protection. The Intel® family of IP network security servers are suited for a host of applications in the network security and industrial environment.



Features ▶

- Intel® Pentium® 4 and Xeon® processor support
- Single or redundant AC/DC power configurations
- Scalable Ethernet ports

Benefits ▶

- Server-optimized CPU performance and power efficiency
- Flexibility of installation and applications and uninterrupted operation
- Multiple configurations using the latest copper and fiber technologies

Applications ▶

- Telecommunications
- Digital office
- Digital health and education
- Government and military
- Industrial and enterprise

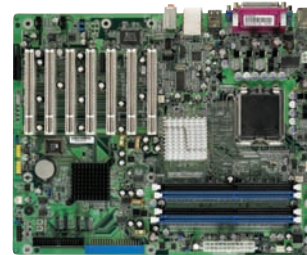
Product Specifications ▶

Type	Part #	Processor Support	Maximum Memory	Maximum HDD and Peripheral Support	LAN Features	Power Supply	PCI Configuration
1U carrier-grade platforms	TCPA0201	OEM Pentium® 4 3.0 GHz, 800FSB	4 Gb DDR2-400 (4)	2 x hot-swap Ultra320 SCSI, CD-ROM	2 x rear Gb	Fixed 250W AC	1 x FH 64/66 PCI-X 3.3v
	TCPA0301	OEM Pentium® 4 3.0 GHz, 800FSB	4 Gb DDR2-400 (4)	1 x hot-swap Ultra320 SCSI, 1 Ext. SCSI, CD-ROM	2 x rear Gb	Fixed 250W AC	1 x FH 64/66 PCI-X 3.3v
	TCPD0201	OEM Pentium® 4 3.0 GHz, 800FSB	4 Gb DDR2-400 (4)	2 x hot-swap Ultra320 SCSI, CD-ROM	2 x rear Gb	Fixed 250W DC	1 x FH 64/66 PCI-X 3.3v
	TCPD0301	OEM Pentium® 4 3.0 GHz, 800FSB	4 Gb DDR2-400 (4)	1 x hot-swap Ultra320 SCSI, 1 Ext. SCSI, CD-ROM	2 x rear Gb	Fixed 250W DC	1 x FH 64/66 PCI-X 3.3v
	TMWA0201W	Two OEM Xeon® 2.33 GHz, 1066FSB	24 Gb DDR-2 533/667 (6)	3 x hot-swap front service SAS, CD-ROM	4 x rear Gb	Single 450 AC (1+1 redundant optional)	1 x PCIe x4 (PCI-X optional)
	TMWD0201W	Two OEM Xeon® 2.33 GHz, 1066FSB	24 Gb DDR-2 533/667 (6)	3 x hot-swap front service SAS, CD-ROM	4 x rear Gb	Single 450 DC (1+1 redundant optional)	1 x PCIe x4 (PCI-X optional)
2U carrier-grade platforms	TLPA0201	Two OEM Dual Xeon® 2.4 GHz, 533FSB	12 Gb DDR-266 (6)	2 x hot-swap Ultra320 SCSI, CD-ROM	2 x rear Gb	Single 500W AC (1+1 redundant optional)	3 x FH PCI-X 3.3v/5v via riser, 3 x LP PCI-X
	TLPD0201	Two OEM Dual Xeon® 2.4 GHz, 533FSB	12 Gb DDR-266 (6)	2 x hot-swap Ultra320 SCSI, CD-ROM	2 x rear Gb	Single 470W DC (1+1 redundant optional)	3 x FH PCI-X 3.3v/5v via riser, 3 x LP PCI-X
	TLIA2201	Two OEM Dual Xeon® 3.2 GHz, 800FSB	12 Gb DDR2-400 (6)	2 x hot-swap Ultra320 SCSI, CD-RW	2 x rear Gb	Single 600W AC (1+1 redundant optional)	3 x FH PCI-X 100, 3 x LP PCI-X 100
	TLID2201	Two OEM Dual Xeon® 3.2 GHz, 800FSB	12 Gb DDR2-400 (6)	2 x hot-swap Ultra320 SCSI, CD-RW	2 x rear Gb	Single 600W DC (1+1 redundant optional)	3 x FH PCI-X 100, 3 x LP PCI-X 100
1U IP network Telco platforms	NSWA0201W	OEM Dual Xeon®, 1066FSB/1333FSB	24 Gb DDR-2 533/667 (6)	2 x fixed SATA, 1 slimline CD-ROM bay	4 x rear Gb	Single 450W AC (1+1 redundant optional)	1 x PCIe x4 (PCI-X optional)
	NSWD0201W	OEM Dual Xeon®, 1066FSB/1333FSB	24 Gb DDR-2 533/667 (6)	2 x fixed SATA, 1 slimline CD-ROM bay	4 x rear Gb	Single 450W DC (1+1 redundant optional)	1 x PCIe x4 (PCI-X optional)
	NSWA0301W	OEM Dual Xeon®, 1066FSB/1333FSB	24 Gb DDR-2 533/667 (6)	2 x fixed SATA, 1 slimline CD-ROM bay	4 to 8 x front Gb	Single 450W AC (1+1 redundant optional)	1 x PCIe x4 (PCI-X optional)
	NSWA0401W	OEM Dual Xeon®, 1066FSB/1333FSB	24 Gb DDR-2 533/667 (6)	2 x fixed SATA, 1 slimline CD-ROM bay	8 x front Gb	Single 450W AC (1+1 redundant optional)	1 x PCIe x4 (PCI-X optional)
2U IP network Telco platforms	NSIA2100	Two Dual Xeon® 3.6 GHz, 800FSB	12 Gb DDR2-400 (6)	2 x fixed SATA	4 to 8 x front Gb and video	Single 600W AC (1+1 redundant optional)	1 x FH PCI-X 100, 2 FH PCIe x4, 3 LP PCI-X 100
	NSCA0201W	Two OEM Dual Xeon®, 1066FSB/1333FSB	32 Gb DDR2-533/667 (8)	6 x hot-swap SAS	2 to 4 rear Gb and 4 to 8 front Gb	Single 600W AC (1+1 redundant optional)	Optional full-height and low-profile riser cards
	NSCD0201W	Two OEM Dual Xeon®, 1066FSB/1333FSB	32 Gb DDR2-533/667 (8)	6 x hot-swap SAS	2 to 4 rear Gb and 4 to 8 front Gb	Single 600W DC (1+1 redundant optional)	Optional full-height and low-profile riser cards



Itox Embedded Motherboards—ATX, microATX, and Mini-ITX

ITOX, a DFI company, is recognized throughout the industry as a leading supplier of x86 embedded motherboards for use in OEM environments including medical electronics, industrial control, security, telecom, ATM/POS, gaming, and kiosk systems. Established in 1981, DFI, Inc. is a worldwide “Top 10” manufacturer of computer motherboards. DFI-ITOX uses only processors and chipsets listed on Intel’s® Embedded Architecture Roadmap in all designs, and guarantees product availability for three to five years.



Features ▶

- Three- to five-year guaranteed product availability
- Stringent revision control—minimal changes over product life cycle
- Revision changes never affect “form, fit, and function”
- Ample end-of-life notification provided—typically six to twelve months advance announcement

Benefits ▶

- Reduced re-engineering and testing costs
- Minimizes recertification requirements (FDA, FCC, UL, etc.)
- Lowers spare part inventory and field maintenance expenses
- Engineers stay focused on improving your product’s features and benefits
- 99% of compatibility issues and field failures resolved within 24 hours

Applications ▶

- Medical diagnostic and imaging systems
- ATM and point-of-sale (POS) equipment
- Industrial control applications
- Security and surveillance systems
- Telecom system applications

Product Specifications ▶

Model	Size	Socket	CPU	Chipset	FSB	Max. RAM	Video Down	ISA	Shared Slot	PCI	AGP	LAN Down	COM	Audio Down	USB	CF	Video Support	Miscellaneous
G4H875-N-G	ATX	478	P4 w/HTT	Intel® 875P	400/800	4 GB	No	0	0	4 PCI 1 PCI-X	Yes	1 Gb 1 10/100	2/2	AC' 97	4	NA	NA	2 SATA supports SATA Raid 0 and Raid 1
G4E620-B-G	ATX	478	P4 w/HTT	Intel® 845E	400/533	2 GB	No	2	1	3	Yes	1	2	AC' 97	4/2	X	NA	WDT
G4S600-B-G	ATX	478	P4 w/HTT	Intel® 865G	400/800	4 GB	Yes	0	0	5	Yes	1	1/1	AC' 97	2/6	NA	NA	2 SATA
G4V620-B-G	ATX	478	P4 w/HTT	Intel® 845GV	400/533	2 GB	Yes	2	1	3	ADD	1	1/1	AC' 97	4/2	X	TV FLTP DVO	WDT
G7B630-B-G	ATX	775	Core™ 2 Duo	Intel® Q965	533 800 1,066	4 GB DDR2	Yes	0	0	4 PCI 1 PCI-E x16 2 PCI-E x1	No	1 Gb	1/1	AC' 97	4/6	NA	Options for Dual LAN and on-board RAID	5 SATA WDT
G7V600-B-G	ATX	775	P4 w/HTT	Intel® 915GV	533/800	4 GB	Yes	0	0	7	No	1 Gb	1/1	AC' 97	4/4	NA	NA	4 SATA WDT
G7L630-P-G	ATX	775	Pentium® D Celeron® D	Intel® 945G	533 800 1,066	4 GB	Yes	0	0	4 PCI 1 PCI-E x16 1 PCI-E x1	No	1 Gb	1/1	AC' 97	4/4	NA	NA	4 SATA
G7S600-B-G	ATX	775	Pentium® D Celeron® D	Intel® 865G	533/800	4 GB	Yes	0	0	6 PCI	Yes	1 Gb	1/1	AC' 97	4/4	NA	NA	2 SATA WDT
G7S620-N-G	ATX	775	Core Duo	Intel® 865G	533/800	4 GB	Yes	2	0	4	Yes	Dual GB LAN	1/3	AC' 97	4/4	NA	NA	2 SATA WDT
GC6B0BX-G	ATX	370	PIII and Celeron®	Intel® 440BX	66/100	384 MB	No	2	1	3	Yes	0	2	NA	2 (1.1)	NA	NA	NA

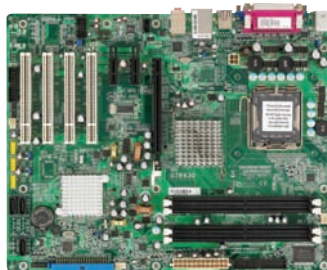
Related Information ▶ ITOX also supplies: mini-ITX, mid-tower, desktop, and rack-mount cases



Itox Embedded Motherboards—Continued (microATX through Mini-ITX)

Product Specifications ▶

Model	Size	Socket	CPU	Chipset	FSB	Max. RAM	Video Down	ISA	Shared Slot	PCI	AGP	LAN Down	COM	Audio Down	USB	CF	Video Support	Miscellaneous
G4M300-M12-G	microATX	478	Bundled 1.2 GHz Celeron® M	Intel® 852GM	400	1 GB	Yes	0	0	1	No	1	1/3	AC'97	2/4	NA	LFP LVDS interface	LVDS LCD panel connector
G4S300-B-G	microATX	478	P4 w/HTT	Intel® 865G	400/800	2 GB	Yes	0	0	3	Yes	1	1/1	AC'97	4/4	NA	NA	2 SATA
G4V300-D-G	microATX	478	P4 w/HTT	Intel® 845GV	400/533	2 GB	Yes	0	0	3	ADD	1	1/1	AC'97	2/4	NA	TV FLTP DVO	WDT
G5G330-P-G	microATX	mPGA479M	Pentium® M Celeron® M	Intel® 915GM	400/533	2 GB	Yes	0	0	2 PCI 1 PCI-E x16 1 PCI-E x1	No	1 Gb	1/3	AC'97	1/3	NA	NA	2 SATA WDT 2 IEEE 1394
G7B330-B-G	microATX	775	Core™ 2 Duo	Intel® Q965	533 800 1,066	4 GB DDR2	Yes	0	0	2 PCI 1 PCI-E x16 2 PCI-E x1	No	1 Gb	1/1	AC'97	4/4	NA	NA	3 SATA WDT
G7L330-B2-G	microATX	775	Pentium® D Celeron® D	Intel® 945G	533 800 1,066	4 GB	Yes	0	0	2 PCI 1 PCI-E x16 1 PCI-E x1	No	1 Gb	2	AC'97	4/4	NA	NA	4 SATA 2 IEEE 1394
G7V300-P-G	microATX	775	P4 w/HTT	Intel® 915GV	533/800	4 GB	Yes	0	0	4	No	1 Gb	1/3	AC'97	4/4	NA	NA	4 SATA
G7V330-B-G	microATX	775	P4 w/HTT	Intel® 915GV	533/800	4 GB	Yes	0	0	2 PCI 1 PCI-E x16 1 PCI-E x1	No	1 Gb	1/1	AC'97	4/4	NA	NA	4 SATA 2 IEEE 1394
G4G100-N-G	Mini-ITX	478	Pentium® 4 Celeron® D	Intel® 915GV	533/800	2 GB	Yes	0	0	1 PCI or riser	No	Dual Gb Lan	3/1	AC'97	4/4	NA	NA	WDT 4 SATA
G4M100-MS12-G	Mini-ITX	479	Bundled 1.2 GHz Celeron® M	Intel® 852GM	400	1 GB	Yes	0	0	1 PCI or riser	No	1	3/1	AC'97	4/2	NA	LFP LVDS interface	LVDS LCD panel connector 2 SATA
G4V100-P-G	Mini-ITX	478	P4 w/HTT	Intel® 845GV	400/533	2 GB	Yes	0	0	1 PCI or riser	No	1	2/2	AC'97	2/4	NA	LVDS transmitter	LVDS LCD panel connector
G5C100-N-G	Mini-ITX	mPGA479M	Core™ 2 Duo Celeron® D	Intel® 945GM	533/667	4 GB DDR2	Yes	0	0	1 PCI or riser	No	Dual Gb Lan	3/1	AC'97	4/4	X	NA	LVDS LCD panel connector 2 SATA WDT
G5G100-P-G	Mini-ITX	mPGA479M	Pentium® M Celeron® M	Intel® 915GM	400/533	2 GB	Yes	0	0	1 PCI or riser	No	1 Gb	3/1	AC'97	4/4	NA	NA	2 SATA WDT
G5G101-P-G	Mini-ITX	mPGA479M	Pentium® M Celeron® M	Intel® 915GM	400/533	2 GB	Yes	0	0	1 PCI or riser	No	1 Gb	1/1	AC'97	4/4	X	NA	DC Input 16V ~ 22V LVDS LCD panel connector 2 SATA WDT
G5M150-N06C-G	Mini-ITX	CPU down	Embedded 600 MHz Celeron® M	Intel® 852GM	400	1 GB	Yes	0	0	1/1 Mini PCI socket	No	Dual 10/100	3/1	AC'97	4/2	NA	LFP LVDS interface	LVDS LCD panel connector
G7V100-B-G	Mini-ITX	478	P4 w/HTT	Intel® 845GV	533/800	4 GB	Yes	0	0	1 PCI or riser	No	1 Gb	1/1	AC'97	4/4	NA	Digital I/O support	2 SATA WDT



Related Information ▶ ITOX also supplies: mini-ITX, mid-tower, desktop, and rack-mount cases



Lanner—Applied Computing Solutions

Lanner Electronics Inc. is the worldwide leader in network security hardware and applied computing solutions. Lanner’s engineers boast a wealth of experience to guarantee complete fluency, avoiding the problem of lags or dropped packets from minor inconsistencies. Lanner’s key industry partnerships allow us to provide the latest innovations in network security. With platforms specifically manufactured for tough and rugged environments, working with Lanner ensures that applications will stand the test of time.



Features ▶

- Advanced PC architecture
- Long lifespan
- Customizable specifications
- Leading-edge RISC technology
- Acceleration cards

Benefits ▶

- Mechanical design and hardware customization
- Fully automated in-house production
- Subcontractors in Taiwan and China
- Commitment to efficiency, quality, and excellence
- RoHS-compliant

Applications ▶

- Point-of-sale: track inventory effortlessly with Wi-Fi® to improve system management and overall efficiency
- Dynamic signs: GPS triggers advertisements for businesses in the immediate area
- Gaming/gambling machines: FPGA hardware from a range of vendors programmed to Japanese Amusement Machine Manufacturers' Association (JAMMA) specifications
- Network security appliance: firewall gateway, SSL/IPSec VPN appliance, anti-virus, and content filtering
- Network traffic-management appliance: networking traffic monitoring and management, caching, load balance, quality of service, wireless security/authentication, and AAA

Product Specifications ▶

Type	Part Number	Form Factor	Processor or Processor Support	# of Processors	I/O	Network (Mb/s)	Integrated Graphics	Memory	Storage Interface	Other
Applied computing platforms	EM-F550	Embedded system	AMD ULV NX 1250 or 1500	1	USB x4, COM, 5.1 audio, parallel	10/100/1,000 (RJ45)	VGA	200-pin SO-DIMM x1	CF/IDE/SATA	Fanless operation
	EM-S560	Embedded system	Intel® Pentium® M/ Celeron® M, socket 478	1	USB x4, COM x3, parallel, 5.1 audio	10/100 (RJ45)	VGA, DVI	184-pin DIMM x1	IDE x1	Gaming IO controller
	EM-9684	Mini-ITX	Support Intel® Core™ 2 Duo, socket 478	1	USB x6, PCOM x4, parallel, mini-PCI, PCI-E x16	10/100/1,000 (RJ45)	VGA, LVDS, SDVO, TV-out	240-pin DIMM x1	IDE/ SATA x2	Onboard amplifier
	EM-9642	Mini-ITX	Intel® Pentium® M/ Celeron® M, socket 478	1	USB x6, COM x3, PCI, floppy, 5.1 audio	10/100/1,000 (RJ45)	VGA, LVDS, DVI, TV-out	184-pin DIMM x1	IDE x2	NA
	EM-9640	Mini-ITX	AMD ULV NX 1250,1500,1750	1	USB x4, COM x4, parallel, 8-bit digital IO, PCI	10/100/1,000 (RJ45)	VGA, LVDS	200-pin SO-DIMM x1	IDE x1/ SATA x2	NA
	EM-9765	ITX	VIA C7 1.2 GHz	1	USB x6, COM x4, 8-bit digital IO, parallel, 5.1 audio	10/100/1,000 (RJ45)	VGA, LVDS, TV-out	240-pin DIMM x2	IDE x2/ SATA x2	NA
	EM-9360	3.5" EBC	VIA Mark 533 MHz/ 800 MHz	1	USB 1.1 x2, COM x4, 8-bit digital IO, PC/104, audio	10/100 (RJ45)	VGA, LVDS	144-pin SO DIMM x1	IDE x1	NA
	EM-354	3.5" EBC	ULV Celeron® 400 MHz/650 MHz	1	USB 1.1 x4, COM x4, parallel, PC/104, audio	10/100 (RJ45)	VGA, LVDS	200-pin SO-DIMM x1	IDE x1	NA
	IAC-F848	Full-size SBC	Supports LGA775 Intel® Pentium® 4, Pentium® D with 533 MHz/800 MHz/ 1,066 MHz FSB	1	USB x8, COM x4, parallel, 4-bit digital IO, mini-PCI	10/100/1,000 (RJ45)	VGA (optional DVA, LVDS, and TV-out)	240-pin DIMM x2	IDE x1/ SATA x4/ CF x1	NA
	IAC-H672	Half-size SBC	VIA Mark 533 MHz/800 MHz	1	USB 1.1 x4, COM x2, 8-bit digital IO, parallel, audio	10/100 (RJ45)	VGA	144-pin SO DIMM x1	IDE x1/ CF x1	DOC socket x1, supports msystem DickonChip 2000
Network appliance	FW-8890	2U rack-mount	Supports two Intel® dual core XEON® Sequence 5000/5100 Processors, LGA 771	2	USB x2/IPMI/Console, PCI-X/PCI-E	Supports up to 12 10/100/1,000 Mb/s ports VIA expansion module	NA	240-pin FB DIMM x8	SATA x4	Flash memory
	FW-8650	1U rack-mount	Supports Intel® Core™ 2 Duo E6000 and E4300, LGA 775	1	USB2.0 x2/console/ PCI x2/ PCI-E x2	10/100/1,000 Mbps x 6 (RJ45 x 6)	NA	240-pin DIMM x2	IDE x1, SATA x2, CF x1	NA
	FW-6440/6490	Desktop/ 1U rack-mount	VIA Eden/ C3 V4/ C7 V4	1	USB x2/console/ 4 ports FE switch	10/100 Mb/s x4 (RJ45 x4)	NA	240-pin DIMM x1	SATA x1, CF x1	NA
	FW-6430	Desktop	VIA Eden	1	USB2.0x1/console (RJ45)	10/100 Mb/s x4 (RJ45 x4)	NA	Onboard	CF x1	NA
	MR-960	2U rack-mount	Cavium OCTEON CN38XX Series, 600 MHz	1	USB x2/console	10 GBE ports (optional 8 SFP connectors)	NA	240-pin DIMM x2	SATA x3, CF x1	NA
	MR-950	2U rack-mount	RMI XLR 732/716/532/516 processor	1	USB x2/console	1 GBE with RJ45 connector x16	NA	240-pin DIMM x4	SATA x3, CF x1	NA
Accessories	Content inspection accelerators	Mini-PCI/PCI/ PCI-X	Lionic epavis	NA	Mini-PCI/PCI/PCI-X	30-1,600 Mb/s layer 7 content inspection acceleration	NA	NA	NA	NA
	VPN accelerator	Mini-PCI/PCI/ PCI-X	Cavium CN501, CN505, CN1005, CN1010, Safenet SafeXcel 1141	NA	Mini-PCI/PCI/PCI-X	IPSec ESP and AH • Encrypt/decrypt • Public key operations • Random number	NA	NA	NA	NA
	Expansion modules	PCI-X/PCI-E	NA	NA	2 and 4 Ethernet or SFP ports	Copper and fibre network expansion modules for network appliance	NA	NA	NA	NA

Wired/Wireless Embedded Network Connectivity



With the fast growth of device networking, Lantronix recognizes that design engineers need reliable embedded Ethernet and wireless networking solutions that offer a simple, cost-effective, and reliable way to seamlessly embed network connectivity into their products.

With very little effort, minimal development time, and a fraction of the time required to develop an in-house solution, OEMs can add full Ethernet and/or wireless connectivity to their products so they can be managed over a network or the Internet.

Features ▶

- Ethernet 10/100 and 802.11 b/g solutions
- High-speed 921 Kb/s serial input
- Wired/wireless pin-compatible SKU option
- Multi-GPIO (control pins)
- SSL/SSH/AES security
- Built-in CGI web server
- Email alerts/SNMP

Benefits ▶

- Lower cost of networking enablement
- Embedded architecture is turnkey for your application
- Reliable embedded Ethernet and wireless networking solutions
- Minimal engineering effort and costs required to web-enable virtually any electronic device
- Everything you need—hardware, application firmware, and deployment software

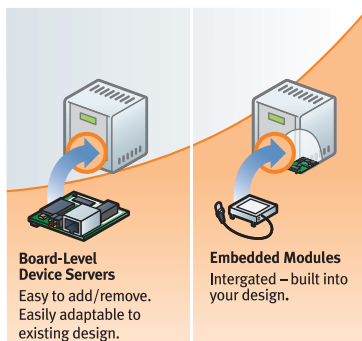
Applications ▶

- Building automation (lighting, etc.)
- Energy/metering applications
- Home automation (high-end audio, alarm panels, etc.)
- Point-of-sale (POS) products
- RFID readers
- Sensors and controllers

Product Specifications ▶

Type	Part Number	Network	Form Factor	# of Serial Ports	Flash Memory	I/O	Plug in Connector or Soldered to Motherboard	Integrated CGI Web Server	Web Page Memory	AES Security Option
XPort® Direct™	XD1001000-01	Ethernet	Module	1	128 KB	2	Both	No	0	No
XPort®	XP1001001-03R	Ethernet	Module	1	512 KB	3	Soldered	Yes	384 KB	Yes
XPort® AR	XP3002000-01R	Ethernet	Module	2	4 MB	11	Soldered	Yes	1.5 MB	Yes
WiPort™	WP2001000G-02	Wireless 802.11	Module	2	2 MB	11	Connector	Yes	1.2 MB	Yes
WiPort™ NR	WP5001000-01	Ethernet	Module	2	2 MB	11	Connector	Yes	1.2 MB	Yes
XPort® Evaluation Kit	XP100200K-03	Ethernet	Kit	1	NA	NA	NA	NA	NA	NA
XPort® Direct™ Demonstration Kit	XD100100K-01	Ethernet	Kit	1	NA	NA	NA	NA	NA	NA
Micro100	MO11AA002-01R	Ethernet	Board	1	NA	NA	Connector	Yes	384 KB	Yes
WiPort™ Evaluation Kit	WP200200KG-02	Wireless 802.11	Kit	1	NA	NA	NA	NA	NA	NA
UDS1100-B	UD110000B-01	Ethernet	Board	1	2 MB	0	NA	Yes	1.2 MB	No
WiBox™ Board	WB2100EGB-01	Wireless 802.11	Board	2	2 MB	0	NA	Yes	1.2 MB	Yes

Related Information ▶



Visit www.arrow.com and try out Lantronix products with our Arrow TestdriveSM program.



Motorola

Since Motorola invented the VMEbus over 25 years ago, we have consistently worked to enhance and extend VMEbus technology. Our products are designed to the latest VMEbus specifications and are supported by an extensive range of compatible hardware and software from Motorola and our industry partners. This ecosystem, together with our worldwide sales and support network, help to rapidly integrate the optimum solution for specific applications.



Features ▶

- AltiVec enabled PowerPC processors
- Ethernet connectivity with options for front or P2 I/O
- PMC expansion slots for additional application specific I/O

Benefits ▶

- Full set of I/O features available on all product families
- ECC-protected memory to protect valuable data

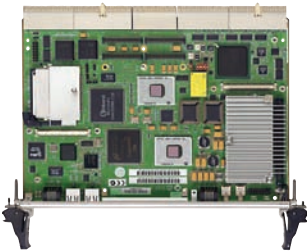
Applications ▶

- Industrial control
- Test/measurement
- Defense/aerospace
- Image processing

Product Specifications ▶

Product	Processor	L1 Cache	L2 Cache	L3 Cache	Memory	Flash	NVRAM (User)	User SROM	Host Bridge	PCI Local Bus	PMC Sites	Ethernet
MVME5100	450 MHz MPC750	32 KB/32 KB	1 MB	None	Up to 1 GB	1 MB + 16 MB	4 KB	256B	Hawk 3	33 MHz, 64-bit	Two 64-bit	Two 10/100 82559ER
MVME5110	500 MHz MPC7410	32 KB/32 KB	2 MB	None	Up to 1 GB	1 MB + 16 MB	4 KB	256B	Hawk 3	33 MHz, 64-bit	Two 64-bit	Two 10/100 82559ER
MVME5500	1 GHz MPC7457	32 KB/32 KB	256 KB	2 MB	Up to 1 GB	8 MB + 32 MB	4 KB	8 KB	Discovery I	Two 33/66 MHz 64-bit	Two 64-bit	One 10/100 and one 10/100/1,000 82554
MVME6100	1.2 GHz MPC7457	32 KB/32 KB	512 KB	2 MB	Up to 2 GB	64 MB + 64 MB	4 KB	8 KB	Discovery II	33/66/100 MHz 64-bit PCI/PCI-X and 133 64-bit MHz PCI-X	Two 64-bit	Two 10/100/1,000
MVME3100	667 MHz MPC8540 or 833 MHz MPC8540	32 KB/32 KB	256 KB	None	Up to 512 MB	64 MB or 128 MB	None	128 KB	Integrated in MPC8540	66 MHz 64-bit PCI-X bridged to 33/66/100 MHz 64-bit PCI/PCI-X	Two 64-bit	Two 10/100/1,000 one 10/100
Quasar MVME6500*	MPC8641D	32 KB/32 KB	1 MB	None	Up to 4 GB	128 MB + 1 GB	4 KB	128 KB	Integrated in MPC8641D	PCI-E	Two 64-bit	Four 10/100/1,000
Product	Serial	IPMC Support	PMCSpan Support	USB	SATA	Timers	Real-Time	Front Panel	P2 I/O Mode	Power Consumption	Thermal	Firmware
MVME5100	Two 16550 compatible	Yes	Yes	No	No	Four + watchdog	M48T37V	Console, 2 Ethernet, 2 PMC cutouts, reset/abort, LEDs	PMC, 712/761	~15W	0°C to +55°C	PPC6Bug
MVME5110	Two 16550 compatible	Yes	Yes	No	No	Four + watchdog	M48T37V	Console, 2 Ethernet, 2 PMC cutouts, reset/abort, LEDs	PMC, 712/761	~17.5W	0°C to +55°C	PPC6Bug
MVME5500	Two 16550 compatible	Yes	Yes	No	No	Eight + watchdog	M48T37V	Console, 2 Ethernet, 2 PMC cutouts, reset/abort, LEDs	PMC, 712/761	~37.5W	0°C to +55°C	MOTLoad
MVME6100	Two 16550 compatible	Yes	Yes	No	No	Four + watchdog	M48T37V	Console, 2 Ethernet, 2 PMC cutouts, reset/abort, LEDs	PMC, 712/761	~42W	0°C to +55°C	MOTLoad
MVME3100	Five 16550 compatible	No	Yes	Yes	Yes	Eight + watchdog	DS1375	Console, Ethernet, 2 PMC cutouts, sATA, (USB), reset/abort, LEDs	721	~22.5W	0°C to +55°C	MOTLoad
Quasar MVME6500*	Five 16550 compatible	No	PMCEXP	Yes	No	Four + watchdog	M48T37V	Console, 2 Ethernet, 2 PMC cutouts, USB, reset/abort, LEDs	721	50W-100W	0°C to +55°C	MOTLoad

*Quasar currently in development and features subject to change.



CompactPCI® Products

Motorola offers an array of open standards-based, state-of-the-art CompactPCI® boards featuring Intel® and PowerPC processors. Designed for telecommunications, data communications, real-time imaging, industrial control, and other OEM applications, all Motorola single-board computers are designed for maximum reliability, scalability, and serviceability. Our CompactPCI technology product line includes carrier-class systems designed for deployment in critical telecom applications and fault-resilient systems ideal for enterprise use. Motorola provides support for Linux, VxWorks, and other real-time operating systems to maximize productivity and reduce time to market for system architects and developers.

Features ▶

- Intel® architecture and PowerPC processor blades
- Universal mode system—or peripheral-slot functionality
- ECC-protected memory
- IMPI system management support (PICMG 2.9)
- PMC expansion slots for additional application specific I/O
- Application flexibility with Linux, VxWorks, and other real-time O/S

Benefits ▶

- Optimized for performance, power, and features
- Accommodates additional application specific I/O
- Application flexibility

Applications ▶

- Telecommunications soft switches, control plane media transport nodes, wireless gateways, and packet switching
- Compute intensive-processing engines and gateway controllers
- Industrial automation
- Military/aerospace

Product Specifications ▶

Product	Processor	L2 Cache	Memory	MPU Bus Speed	Chipset Arch.	PMC Sites	Compact Flash	Networking	USB	Serial Interfaces	Peripheral Interfaces	Transition Modules	Front Panel I/O	Other Features
CPCI-7070	Up to 1.0 GHz Intel® Pentium® III	512 KB (440 GX integrated)	512 MB/1 GB ECC-protected SDRAM	100 MHz	Intel® 440 GX	Single	On-board (primary IDE) and available on RTM (secondary IDE)	Dual 10/100 82559; individually routed front/rear via BIOS	Dual	Dual	Two EIDE Ultra DMA/33 channels (primary on-board; secondary to RTB); FDD, KBD/MSE, IEEE-1284 parallel port, AGP video (CT69030)	CPCI-7070-CPTM-04	One PMC cutout, VGA, KBD/MSE, dual Ethernet, COM1, reset switch, status LEDs	Formerly CPV5370
CPCI-7145	1.8 GHz Intel® Pentium® M	2 MB integrated	2 GB ECC-protected DDR SDRAM	400 MHz	Intel® E7501-ICH3-S	Single	Accessory kit	Dual-gigabit Ethernet (rear) fast (10/100) front	Dual 1.1, one front/one rear	Dual, COM1 Fr/Rr, COM2 rear	IDE (ATA100) primary=on-board connector secondary via RTB, optional hard drive kit	RTB-714x/PSB-5E, RTB-714x-5E, RTB-714x PIM-5E, RTB-714x PIM/PSB-5E	One PMC cutout, VGA, COM1, KBD/MSE, USB 1.1, fast Ethernet, reset switch, LED	Formerly CPCI-745+
CPCI-7147	1.4 GHz Intel® Pentium® M	1 MB	2 GB ECC-protected DDR SDRAM	400 MHz	Intel® 855GME/6300ESB	Dual	Accessory kit	Dual-gigabit Ethernet front/rear	Single, USB 2.0 front/rear	Three, COM1 front, COM2/3 rear	IDE (ATA100) primary=on-board connector secondary via RTB, optional compact Flash/hard drive kit	RTB-714x/PSB-5E, RTB-714x-5E, RTB-714x PIM-5E, RTB-714x PIM/PSB-5E	One PMC cutout, VGA, COM1, KBD/MSE, USB 2.0, dual Ethernet, reset switch, status LEDs	Formerly CPCI-747 and CPN5365/85
CPCI-6020	500 MHz MPC7410	2 MB	128 MB-2.5 GB ECC SDRAM	100 MHz	PowerPlus III	Dual	Available on RTM	Dual 10/100/1,000 BaseT Ethernet (PICMG 2.16 compliant)	Dual	Four	EIDE, optional CompactFlash®	MCIPTM-02 MCPTM-02	Serial, two Ethernet, two PMC, abort/reset switches, status LEDs	Formerly MCP820
CPCI-6065	500 MHz MCP7410 or 450 MHz PowerPC 750	1 MB or 2 MB	64 MB-1 GB ECC SDRAM	100 MHz	PowerPlus II	Dual	Available on RTM	Dual 10/100 BaseT Ethernet	Dual	Four	EIDE, optional CompactFlash	TM-PIMC-0101	Two PMC, serial, Ethernet, abort/reset switch, status LEDs	Formerly MCPN765
CPCI-6115	Up to 1.0 GHz MPC7457 with Altivec technology	1 MB or 2 MB	2 GB DDR ECC	133 MHz	PowerPlus III	Dual	Available on RTM	Dual 10/100/100 BaseT PICMG 2.16 compliant Single 10/100/1,000 BaseT Front Panel	None	Dual	EIDE, optional CompactFlash	CPCI-6115-MCPTM-02	Two PMC, serial, Ethernet, abort/reset switch, status LEDs	Formerly MCPN905
CPCI-6190	Up to 1 GHz 750 GX	1 MB	Up to 1 GB high-speed SDRAM	133 MHz	CHRP	Dual	Accessory kit(s)	Dual 10/100 BaseT PICMG 2.16 compliant single 10/100 BaseT front panel	None	Dual	Two EIDE (ATA100) optional CompactFlash	RTB-6190-5E, RTB-610X/PSB-5E	Two PMC, serial, Ethernet, abort/reset switch, status LEDs	Formerly CPC1690



Motorola

Motorola's extensive family of processor PMC modules feature a complete host microprocessor and memory subsystem on an ANSI VITA 32 standard compact form factor. A PrPMC design approach allows customers to design simpler and smaller baseboards and focus their resources on adding value to their products through innovation such as software or custom interfaces. Motorola's PrPMC products can help shorten the design cycle, speed time-to-market, and reduce the time and complexity of upgrading, which lowers the total cost of ownership and provides excellent scalability.

Features ▶

- AltiVec enabled PowerPC processors
- Up to 128 MB on-board Flash
- Up to 1 GB memory
- 33/66 MHz PCI interface

Benefits ▶

Increased processing, memory, and I/O performance while protecting existing platform investment for existing CompactPCI, VMEbus, ATCA, or custom carrier platform



Applications ▶

- Industrial control
- Test/measurement
- Defense/aerospace
- Image processing

Product Specifications ▶

Product	Processor	L1 Cache	L2 Cache	Memory	Flash	User SRAM	Host Bridge	PCI Local Bus	Ethernet	Serial	Timers	Real-Time Clock	Front Panel	Pn4	Power Consumption (W)	Thermal (°C)	Firmware
PrPMC2750	1 GHz MPC750GX	32 KB instruction, 32 KB data	512 KB	512 MB	64 MB user, 1 MB boot	None	Discovery II	PCI 33/66 MHz, 64-bit	Discovery dual gigabit	2	One iFC based, one 32-bit watchdog	MAX6900	Blank	Two serial, two Ethernet, iFC	18.7	0 to +55	PowerBoot
PrPMC2800	1 GHz MPC7447A	32 KB instruction, 32 KB data	512 KB	512 MB	64 MB user, 2 MB boot	None	Discovery II	PCI 33/66 MHz, 64-bit	Discovery dual gigabit	2	One iFC based, one 32-bit watchdog	MAX6900	Blank	Two serial, two Ethernet, iFC	30	0 to +55	PowerBoot
PrPMC8005E	450 MHz MPC7410	32 KB instruction, 32 KB data	1 MB-2 MB	128 MB/256 MB/512 MB	32 MB	None	Harrier	PCI 33/66 MHz, 64-bit	82559ER (10/100)	1	Four 32-bit counter/timers, one watchdog	No	Ethernet on-1261	Ethernet on-1259, -1269; console, iFC, flash device bus	~11	0 to +55	PPCBUG
PrPMC8150	800 MHz MPC750FX	32 KB instruction, 32 KB data	512 KB	256 MB/512 MB	64 MB	None	Harrier	PCI 33/66 MHz, 64-bit	82540 gigabit	1	Four 32-bit counter/timers, one watchdog	MAX6900	Ethernet on-2371	Ethernet on-3271, -4361, -4371; console; iFC; flash device bus	~15	0 to +55	PPCBUG
PrPMC6001	1.4 GHz MPC7448	32 KB instruction, 32 KB data	1 MB	512 MB/1 GB	128 MB user, 4 MB boot	None	Discovery III	PCI/PCI-X 33/66/133 MHz, 64-bit	Discovery dual gigabit	2	Four 32-bit counter/timers, one watchdog	MAX6900	Blank	Two Ethernet, two serial, iFC	~19	0 to +55	PowerBoot



Motorola

The Motorola MicroTCA platforms, modules, and software enable your customers to deliver their applications to market quicker. Motorola is leading the charge to develop innovative and cost effective MicroTCA building blocks that are suitable for use in the telecom, defense, and medical markets. These elements leverage all the technology and stability that was designed into AdvancedTCA but in a form factor that offers flexible packaging solutions.

Features ▶

- Small form factor
- Lower cost
- Flexible packaging solutions
- Based on open standards
- Wide range of modules

Benefits ▶

- Suitable for a wide range of applications
- Enables economy of scale by using common elements
- Fast time to revenue
- Concentrate on added value

Applications ▶

- Wireless base stations
- IP-PBX
- Defense open architecture
- Video gateways
- Diagnostic imaging and monitoring

Product Specifications ▶

Product	Processor Type	Memory	I/O Type	Supported Interfaces	OS/Software	Availability
AMC Processor						
PrAMC-6201	PowerPC 7448, 1.4 GHz	Up to 2 GB	2x Gigabit Ethernet	AMC.1 PCI Express, AMC.2 Gigabit Ethernet, and AMC.3 SATA	MV CGE 4.0, WR PNE Linux, IPMI v1.5	EA now, GA July 2007
PrAMC-7201	Pentium® M, 1.4 GHz and 1.8 GHz	2 GB	2x Gigabit Ethernet	AMC.1 PCI Express, AMC.2 Gigabit Ethernet, and AMC.3 SATA	MV CGE 4.0, WR PNE Linux, IPMI v1.5	GA
PrAMC-7210	Intel® Core™ 2 Duo, 1.5 GHz	2 GB	2x Gigabit Ethernet	AMC.1 PCI Express(x8), AMC.2 Gigabit Ethernet, and AMC.3 SATA	MV CGE 4.0, WR PNE Linux, IPMI v1.5	Q4 2007
Product	I/O Type	# of Ports		Communications/Network Processor	Supported Protocols/Key Applications	Availability
AMC I/O Cards						
AMC-S301	SATA disk module, 80 GB	NA		NA	NA	EA now, GA July 2007
Feature		Centellius 1,000		MiDaS		
Shelf form factor						
Slot count		10 full + 1 compact		2 spare payload slots		
Shelf size		19"/23"		19"		
Shelf height		5U		2U		
MCH						
Single star GigE		Yes		Yes		
PCI-Express		Optional		Yes		
Telecom CLK support		Yes		Yes		
Power Modules, OS, Payload Content						
AC Option		Yes		Yes		
DC Option		Yes		No		
Operating system		MV CGE 3.1		WRS PNE 1.3		
		WRS PNE 1.4				
Default payloads		None		Pr-AMC-7201 and AMC-S301		
Product	I/O Type	Number of Ports	Front/Rear Access	Communications/Network Processor	Supported Protocols/Key Applications	Availability
AMC I/O Cards						
AMC-8401	T1/E1/J1	4 or 8	Both	PowerQUICC III	SS7, ATM, frame relay, ISDN/CAS	EA 2Q07, GA 4Q 2007
AMC-8501	OC-3/STM-1 and GbE OR OC-12/STM-4	Quad OC-3 or Dual OC-12	Front	WinPath II	ATM, IP	EA 2Q07, GA 4Q 2007



Motorola

Motorola knows what it takes to make your communications systems work. We offer levels of integration from board level building blocks to the fully integrated Centellis 3000 communications servers. Our Centellis 31KX application-ready platforms are available in a variety of configurations and allow customers to easily take advantage of the ATCA standard by using a pre-tested chassis and manager and by adding switches and payload blades as needed. The recently announced 4100 platform allows in-system upgrades of the 31KX to 10G capability. With ATCA being used in as many as half of new system deployments, now is the time to take advantage of the reduced time to market and development costs that a standard, high volume platform from Motorola can bring.



Features ▶

- Multiple levels of integration
- 14- or 16-slot form factors
- Multiple switch configurations
- Pre-verified thermal capability
- PICMG compliance

Benefits ▶

- Reduced design time and quicker time to revenue
- Allows customer design flexibility
- Suitable for multiple markets, applications, and service providers
- More cost effective implementations
- High reliability, high availability

Applications ▶

- IMS/IP networking functions: CSCF, HLR/HSS, media servers
- Media gateways
- Session border controllers
- Wireless core: GGSN, SGSN, packet processing
- Wireless radio: RNC, MSC
- Military communications installations

Product Specifications ▶

Product	Slot Count	Shelf Size	Shelf Height	Base Interface Support	Fabric Interface Support	Port Trunking	Telecom CLK Support	Switch Blade	Combined Switch and Processor Complex	Operating System	Basic Blade Services	Validation and Interoperability Testing	Availability
ATCA Platforms													
Centellis 31KX	14	19"	13U	PICMG 3.0	Optional PICMG 3.1 option 1; 1 Gb/s	No	Yes	F300 (base channel only), F103 (base + 1G option 1)	No	MontaVista CGE 3.1	Partial	No	Release 3.1 generally available now
Centellis 3000	14 slot and 16 slot	19"/23"	12.5U	PICMG 3.0	PICMG 3.1, option 1, 2, and 3; 1 Gb/s, 2 Gb/s, and 4 Gb/s	Yes	Future	F102	Yes	MontaVista CGE 4.0	Yes	Yes	Release 3.1 GA Q2 2007 release 3.2 GA Q3 2007
Centellis 41KX	14	19"	13U	PICMG 3.0	PICMG 3.1, option 1 and 9; 1 Gb/s and 10 Gb/s	TBD	Yes	F120	Yes	MontaVista CGE 4.1	Yes	Partial	Release 1.0 engineering availability Q4 2007
Product	Processor	Number of Cores	Memory Options	Fabric Type	Fabric Speed	Fabric Config.	Storage	Optional Interfaces	Operating Systems	Other	Availability		
Processor Blades													
ATCA-7105	1.8 GHz Intel® Pentium® M	1	2 GB/4 GB	None	NA	NA	Optional Parallel or Serial ATA	16x 1GE, RTM for USB, I/O, storage	MontaVista CGE 4.0, Wind River PNE 1.4	4x PMC sites	GA		
ATCA-7107	1.8 GHz Intel® Pentium® M	1	2 GB/4 GB	Fiber channel	2 x 1G/2 x 2G	Dual Star	Optional Parallel or Serial ATA	16x 1GE, RTM for USB, I/O, storage	MontaVista CGE 4.0, Wind River PNE 1.4	4x PMC sites	GA		
ATCA-7221	Dual 2.8 GHz Intel® Xeon® LV	2	2 GB/4 GB/8 GB (up to 16 GB capable)	Fiber channel or SCSI	2 x 1G/2 x 2G	Dual Star	Optional SATA or SAS via RTM	RTM for USB, I/O, 2x Ultra320 SCSI, 2x FC	MontaVista CGE 4.0, Wind River PNE 1.4	1x PMC site	GA		
ATCA-7140	Dual dual-core 2.13 GHz Xeon® LV	4	Up to 16 GB	2x FC	2 x 1G	Dual Star	Optional 2.5" SAS via RTM	RTM: FC, SAS HD, SAS port, USB, I/O	MontaVista CGE 4.0, Wind River PNE 1.4	1x AMC	GA Q4 2007		
ATCA-9301	Dual Cavium Octeon 5860	32	up to 8 GB	Option 9	10G	Dual Star	Compact flash	RTM for 10x 1G SFP	Wind River PNE-LE 1.4	NA	EA Q4 2007, GA Q4 2008		
Product	Number of Slots	Disc Format	Drive Options		Fabric Type	Storage Formats Supported		Other	Availability				
Storage Blades													
ATCA-S100	2	3.5"	300 GB		Dual Fiber Channel	RAID-0, RAID-1 and RAID-10		GA					
ATCA-S110	2	3.5"	300 GB		Ultra320 SCSI	None		Dual SCSI interface via RTM	EA now, GA 2Q07				
Product	Number of Slots	Base Interface	Fabric Interface	Fabric Speed	Other		Availability						
AMC Carrier Blades													
ATCA-C110	4 full-height single-wide sites	PICMG 3.0 gigabit Ethernet	PICMG 3.1, option 1, 2, and 3 fabric interface support		1G/2G	AMC.0, AMC.1, AMC.2, and AMC.3 compliant		Not for new design					
ATCA-C121	4 mid-size slots, supports 2 double-width AMCs	PICMG 3.0 gigabit Ethernet	1 and 10 gigabit Ethernet (ATCA 3.1 options 1, 9) ATCA fabric, as well as gigabit Ethernet base interface links		1G/10G	AMC.1 and AMC.2 compliant		EA Q3 2007, GA Q4 2007					

Arrow Electronics Embedded Computing

800-285-7503 | www.arrownac.com



RadiSys Embedded Solutions—Com Express®, Motherboards, and Servers

RadiSys is the leading provider of advanced embedded solutions for the communications, networking, and commercial systems markets. Through intimate customer collaboration, combining innovative technologies and industry leading architecture, RadiSys helps OEMs, systems integrators, and solution providers bring better products to market faster and more economically. RadiSys products include embedded boards, application enabling platforms, and turn-key systems, which are used in today's complex computing, processing, and network intensive applications.

Features ▶

- Procelerant™ COM Express®—COM Express module based on PICMG—open standard with application specific I/O baseboards
- Procelerant Endura Motherboards—long-life industrial motherboards, including small form factor
- Procelerant Embedded Servers—complete turn-key servers available for a wide variety of applications

Benefits ▶

- COM Express—long life (5+ years), small form factor, PCI, PCI Express, serial ATA, and 10/100/1,000 Ethernet
- Motherboards—long life (5 years to 7 years), revision control, rugged design, customizable BIOS, and embedded feature set
- Embedded Servers—single-, dual-, or quad-core processors, various form factors, and long product life-cycle

Applications ▶

- COM Express—medical, test and measurement, gaming, and kiosk
- Motherboards—medical, test and measurement, industrial control, transaction terminals, military, and enterprise
- Embedded Servers—medical, imaging, test and measurement, security, industrial automation, and enterprise

Product Specifications ▶

Type	Part Number	Form Factor	Processor or Processor Support	Memory
Procelerant™ Product Family				
COM Express®	CE945GM2-L74-0	COM Express, basic size, type 2 module	Core™ 2 Duo, 1.5 GHz LV Pentium® M, L7400, OGB	4 GB max.
	CE945GM2-T25-0	COM Express, basic size, type 2 module	Core™ Duo, 2 GHz Pentium® M, T2500	4 GB max.
	CE945GM2-L24-0	COM Express, basic size, type 2 module	Core™ Duo, 1.66 GHz LV Pentium® M, L2400, OGB	4 GB max.
	CE945GM2-423-0	COM Express, basic size, type 2 module	Single-core, 1.06 GHz, Celeron® M 423	4 GB max.
	CE915	COM Express, type 2 basic	2.0, 1.40 Pentium® M, or 1.0, 1.5 Celeron®	2 GB max.
Endura Motherboards				
Motherboard	EM945G	uATX	Pentium® 4, Celeron® D, FSB: 800/533 MHz	4 GB max.
	RB945G	ATX	Pentium® 4, Celeron® D, FSB: 800/533 MHz	4 GB max.
	OP945G	uBTX	Pentium® 4, Celeron® D, FSB: 800/533 MHz	4 GB max.
	TP945GM	Mini-ITX	Celeron® M ULV 423 1.06 GHz	4 GB max.
	BY915GV	uATX	Pentium® 4, Celeron® D, FSB: 800/533 MHz	4 GB max.
	LR915G	uATX	Pentium® 4, Celeron® D, FSB: 800/533 MHz	4 GB max.
	KP915GV	ATX	Pentium® 4, Celeron® D, FSB: 800/533 MHz	4 GB max.
	AB915GM	FlexATX	Pentium® M, Celeron® M, FSB: 533/400 MHz	2 GB max.
	LS855	uATX	Pentium® M, Celeron® M, FSB: 533/400 MHz	2 GB max. with ECC support
	SH845GV	ATX	Pentium® 4, Celeron®, FSB: 533/400 MHz	2 GB max.
	BG845GV	uATX	Pentium® 4, Celeron®, FSB: 533/400 MHz	2 GB max.
	CH815C	uATX	Pentium® III/Celeron®	512 MB max.
	GL815E	ATX	Pentium® III/Celeron®	512 MB max.
SC815E	FlexATX	Pentium® III/Celeron®	512 MB max.	
Embedded Servers				
Embedded server	RMS420-5000XI-007	Quad-core, 4U rack-mount server	2x quad-core Xeon® 2.33 GHz	2 GB max.
	RMS420-5000XI-005	4U rack-mount server	2x dual-core Xeon® 2.33 GHz	2 GB max.
	RMS420-945RB	4U rack-mount server	3.4 GHz Pentium® 4 Processor 341	4 GB max.
Other				
Chip set	R380EX-02-R	Integrated chipset for the 386—RoHS-compliant	NA	NA
	R400EX-02-R	Integrated chipset for the 486—RoHS-compliant	NA	NA



RadiSys AdvancedTCA Product Family

The RadiSys strategy delivers a common managed platform for network element and data plane applications. The Promentum® SYS-6010 is the industry's first ATCA 10 Gigabit managed platform. It is a fully-integrated and validated managed platform designed to address high-speed I/O and bandwidth intensive applications implemented in a flexible and reliable architecture.



Features ▶

The RadiSys Promentum® ATCA (AdvancedTCA) family includes a fully integrated application ready platform and modular building blocks configured for multiple applications

Benefits ▶

Going beyond simple building blocks, the RadiSys ATCA strategy delivers a common managed platform for network and data-plane applications; by utilizing the same managed platform for a variety of applications, telecom equipment manufacturers (TEMs) can reduce overall development time by up to 50 percent and significantly reduce development, lifecycle, and equipment costs

Applications ▶

IPTV, IMS, radio network controllers (RNC), session border controllers (SBC), WiMAX, and media gateways (MGW), network appliance, packet inspection

Product Specifications ▶

Type	Part Number	Description
Promentum™ ATCA Platforms and Building Blocks		
SYS-6000 Configured System Product Family		
1 GbE	SYS6K-CFG001	ATCA, 12U x 14 slots
10 GbE	SYS6010-CFG01	ATCA, 12U x 14 slots
	SYS6010-CFG01-L3	ATCA, 12U x 14 slots
	SYS6006-CFG01	ATCA, 5U x 6 slots
Hardware building blocks and line cards	ATCA-1200	Managed quad-AMC carrier
	ATCA-2100	Fibre channel switch and control module
	ATCA-2210	10 GB switch and control module
	ATCA-3000	Fibre-channel 147 GB storage
	ATCA-3100	Dual 300 GB fibre channel storage
	ATCA-4000	Dual Intel® 2.0 GHz dual-core LV Xeon® processor blade (Prestonia)
	ATCA-4200	Dual Intel® 2.8GHz LV Xeon® processor blade (Nocona)
	ATCA-4300	Dual Intel® 2.0GHz dual-core LV Xeon® processor blade (Sossaman)
	ATCA-7010	Dual IXP-28xx network processor blade
	ATCA-7200	Quad-gigabit Ethernet AMC, line card
	ATCA-7800	PowerPC dual-core processing line card
	ATCA-6006	5U, 6-slot chassis
	ATCA-6000	12U, 14-slot chassis
	AMC-7211	Quad-gigabit Ethernet AMC
	AMC-8202	Dual-core Freescale MCP8641D PowerPC processor AMC
	AMC-3201/3202	SAS/SATA disk AMC



 **FLAT PANEL
DISPLAYS**



ARROW ELECTRONICS, INC.

Flat Panel Displays ►

www.arrownac.com