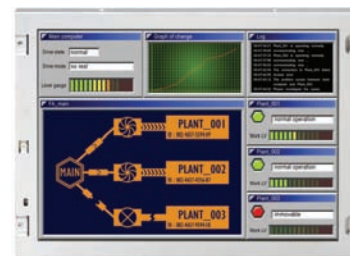


NEC

NEC Display Products

NEC is committed to providing innovative solutions to support the non-PC TFT LCD module industry with panels from 2.7" to 23". NEC has a continuing trend for wide-aspect ratios, wide displays, and NLT transfective technologies in industrial applications and emerging technologies. NEC delivers a wide range of technologically advanced display solutions backed by leading-edge design, long-term product support, and product migration paths. NEC products are based on four core technologies: ultra-wide viewing (SFT), natural-light (NLT), adaptive-design and value-integrated (VIT) (SOG) technologies that are developed from the customer's perspective and deliver a new dimension of quality for industrial and high-end monitor applications. NEC is committed to environmentally friendly initiatives. All products are reduction of hazardous substances (RoHS) compliant.



Features ▶

- Long term product life
- Broad industrial product offering from 2.7" to 23"
- Drop in replacement
- Industrial EOL policy

Benefits ▶

- 5-7 year product life
- 18-24 month EOL policy
- Proven industrial track record

Applications ▶

EC uses our proprietary SFT, NLT, VIT, and adaptive design technologies to deliver high-image quality, high-performance LCDs suitable for a wide range of applications such as medical, broadcasting, industrial, factory automation, mobile, outdoor viewable products, and many more.

Product Specifications ▶

Size	Part Number	Resolution	Contrast Ratio Viewing Angle (Left/Right) (Top/Bottom)	Luminance (cd/m ²)	Backlight Type	Interface	Operating Temperature (°C)	Features/Remarks	Color	Category
2.7"	NL2432HC17-01B	QVGA 240 x 320	400:1 50/50, 60/30	180	LED	6-bit digital	-20~+60	With touch panel, transmissive, portrait	262,144	Mobile
2.7"	NL2432HC17-02A	QVGA 240 x 320	400:1 55/55, 60/30	200	LED	6-bit digital	-20~+60	Transmissive, landscape viewing w/portrait scan	262,144	Mobile
2.7"	NL2432HC17-02B	QVGA 240 x 320	400:1 55/55, 60/30	180	LED	6-bit digital	-20~+60	Transmissive, landscape viewing w/portrait scan, w/touch	262,144	Mobile
2.7"	NL2432HC17-04B	QVGA 240 x 320	150:1 30/30, 30/35	100	LED	6-bit digital	-20~+60	SR-NLT, w/touch, 35% reflectivity, portrait, w/TC and DC/DC converter	262,144	Mobile
2.7"	NL2432HC17-07A	QVGA 240x320	400:1 50/50, 60/30	550	LED	6-bit digital	-20°C~+10°C	Transmissive portrait viewing angle	262,144	Mobile
3.5"	NL2432HC22-32B	QVGA 240 x 320	70:1 40/40, 40/35	100 (transmissive mode)	LED	6-bit digital	-20~+55	SR-NLT, w/touch, 12% reflectivity, landscape, AG	262,144	Mobile
3.5"	NL2432HC22-37B	QVGA 240 x 320	300:1 55/55, 60/30	350	LED	6-bit digital	-10~+55	Transmissive, w/touch, landscape, AG	262,144	Mobile
3.5"	NL2432HC22-40A	QVGA 240 x 320	150:1 35/35, 35/35	220 (transmissive mode)	LED	6-bit digital	-20~+70	SR-NLT, portrait, w/TC and DC/DC converter, wide temp	262,144	Mobile
3.5"	NL2432HC22-41B	QVGA 240 x 320	130:1 35/35, 30/35	200 (transmissive mode)	LED	6-bit digital	-20~+70	SR-NLT, portrait, w/TC and DC/DC converter, w/touch, wide temp	262,144	Mobile
4.3"	NL4827HC19-01B	WQVGA 480 x 272	300:1 50/50, 70/40400:1 65/65, 65/40	350	LED	6-bit digital	-10~+60	With touch panel, transmissive, landscape	262,144	Mobile
5.5"	NL3224BC35-20	QVGA 320 x 240	65/40	400	CCFL	6-bit digital	-10 to +70	NA	262,144	Industrial
5.5"	NL3324BC35-22	QVGA 320 x 240	500:1 50/40, 55/55	750	CCFL	6-bit digital	-10 to +70	ST-NLT/QVGA-VGA mode/ reflective mode 2%	262,144	Industrial
6.3"	NL10276BC12-02	XGA 1,024 x 768	500:1 60/60, 45/60	250	CCFL	LVDS 8-/6-bit digital	0 to +65	NA	16.19M/262,144	Industrial
6.5"	NL6448BC20-18D	VGA 640 x 480	600:1 80/80, 80/60	400	CCFL	6-bit digital	-10 to +70	Reverse scan	262,144	Industrial
6.5"	NL6448BC20-20	VGA 640 x 480	600:1 80/80, 80/60	650	CCFL	6-bit digital	-10 to +70	ST-NLT/COG	262,144	Industrial
6.5"	NL10276BC13-01C	XGA 1,024 x 768	500:1 80/80, 80/60	650	LED	LVDS 8-/6-bit digital	-20 to +70	ST-NLT/LED backlight, high resolution/wide temperature	16.77M/262,144	Industrial
7.0"	NL4823HC37-05	WQVGA 480 x 234	600:1 80/80, 80/60	400	CCFL	6-bit digital	-20 to +70	Wide aspect ratio/wide temperature	262,144	Industrial
8.4"	NL6448BC26-08D	VGA 640 x 480	800:1 85/85, 85 /85	400	CCFL	LVDS 8-/6-bit digital	-10 to +70	UA-SFT/reverse scan	16.77M/262,144	Industrial
8.4"	NL6448BC26-09	VGA 640 x 480	600:1 80/80, 80/60	450	CCFL	6-bit digital	-20 to +70	Reverse scan/wide temperature	262,144	Industrial
8.4"	NL6448BC26-09C	VGA 640 x 480	600:1 80/80, 80/60	750	CCFL	6-bit digital	-20 to +70	ST-NLT/wide view and temperature/reverse scan	262,144	Industrial
8.4"	NL8060BC21-02	SVGA 800 x 600	500:1 80/80, 80/60	400	CCFL	LVDS 8-/6-bit digital	-20 to +70	Reverse scan/RF+WW/ wide temperature	16.77M/262,144	Industrial
8.4"	NL8060BC21-03	SVGA 800 x 600	600:1 80/80, 80/60	650	CCFL	LVDS 8-/6-bit digital	-20 to +70	ST-NLT/wide temperature	16.77M/262,144	Industrial
8.4"	NL8060BC21-04	SVGA 800 x 600	600:1 80/80, 80/60	400	CCFL	6-bit digital	-20 to +70	RF+WW/wide temperature	262,144	Industrial
8.4"	NL10276BC16-01	XGA 1,024 x 768	400:1 85/85, 85 /85	400	CCFL	LVDS 8-/6-bit digital	-20 to +60	UA-SFT/reverse scan	16.77M/262,144	Industrial
9.0"	NL8048BC24-01	WVGA 800 x 480	500:1 80/80, 80/60	400	CCFL	LVDS 8-/6-bit digital	-20 to +70	Reverse scan/wide temperature	16.77M/262,144	Industrial

NEC Display Products—Continued

Product Specifications ▶

Size	Part Number	Resolution	Contrast Ratio Viewing Angle (Left/Right) (Top/Bottom)	Luminance (cd/m ²)	Backlight Type	Interface	Operating Temperature (°C)	Features/Remarks	Color	Category
10.4"	NL6448BC33-59	VGA 640 x 480	600:1 70/70, 45/55	450	CCFL	6-bit digital	-10 to +70	Reverse scan/RF	262,144	Industrial
10.4"	NL6448BC33-63D	VGA 640 x 480	600:1 80/80, 80/60	450	CCFL	LVDS 8-/6-bit digital	-20 to +70	RF+WV/wide temperature	16.77M/262,144	Industrial
10.4"	NL6448BC33-64	VGA 640 x 480	600:1 80/80, 80/60	450	CCFL	6-bit digital	-20 to +70	RF+WV/wide temperature	262,144	Industrial
10.4"	NL6448BC33-64C	VGA 640 x 480	600:1 80/80, 80/60	450	CCFL	8-/6-bit digital	-20 to +10	ST-NLT, RF+WV/wide temperature	16.77M/262,144	Industrial
10.4"	NL8060BC26-27	SVGA 800 x 600	700:1 85/85, 85/85	400	CCFL	6-bit digital	-10 to +70	SA-SFT/reverse scan	262,177	Industrial
10.4"	NL8060BC26-28	SVGA 800 x 600	700:1 85/85, 85/85	400	CCFL	LVDS 8-/6-bit digital	-10 to +70	SA-SFT/reverse scan	262,177	Industrial
10.4"	NL10276BC20-04	XGA 1,024 x 768	300:1 60/60, 45/60	300	CCFL	LVDS	-20 to +70	RF+WV/reverse scan/ wide temperature	262,144	Industrial
12.1"	NL8060BC31-27	SVGA 800 x 600	600:1 70/70, 45/55	400	CCFL	6-bit digital	-10 to +70	RF/reverse scan	262,144	Industrial
12.1"	NL8060BC31-27D	SVGA 800 x 600	600:1 70/70, 45/55	400	CCFL	6-bit digital	-10~+70	RF, AG surface, reverse scan	262,144	Industrial
12.1"	NL8060BC31-28D	SVGA 800 x 600	600:1 70/70, 45/55	350	CCFL	LVDS	-10~+70	Reverse scan	262,144	Industrial
12.1"	NL8060BC31-32	SVGA 800 x 600	600:1 70/70, 45/55	400	CCFL	6-bit digital	-10~+70	ST-NLT, reflective mode 2.0% typ.	262,144	Industrial
12.1"	NL8060BC31-36	SVGA 800 x 600	600:1 70/70, 45/55	1100	CCFL	6-bit digital	-10~+70	Bright enhancement based on -27	262,144	Industrial
12.1"	NL8060BC31-41D	SVGA 800 x 600	600:1 80/80, 80/60	400	CCFL	LVDS	-20~+70	COF, reverse scan, RF + WV, wide temp	16.77M	Industrial
12.1"	NL8060BC31-42	SVGA 800 x 600	600:1 80/80, 80/60	400	CCFL	6-bit digital	-20~+70	Reverse scan, RF + WV, wide temp	262,144	Industrial
12.1"	NL8060BC31-42D	SVGA 800 x 600	600:1 80/80, 80/60	400	CCFL	6-bit digital	-20~+70	Reverse scan, RF + WV, wide temp, anti-glare	262,144	Industrial
12.1"	NL10276BC24-13	XGA 1,024 x 768	600:1 70/70, 45/55	400	CCFL	LVDS 8/6-bit RGB	-10~+70	NA	16.77M/262,144	Industrial
12.1"	NL10276BC24-13C	XGA 1,024 x 768	600:1 70/70, 45/55	400	CCFL	LVDS 8/6-bit digital	-10~+70	ST-NLT, AR	16.77M/262,144	Industrial
12.1"	NL10276BC24-14	XGA 1,024 x 768	600:1 45/45, 20/40	300	LED	LVDS	0~+55	LED backlight	262,144	Industrial
15"	NL10276BC30-15	XGA 1,024 x 768	400:1 60/60, 40/60	250	CCFL	LVDS	0~+50	NA	262,144	Industrial
15"	NL10276BC30-17	XGA 1,024 x 768	700:1 85/85, 85/85	350	CCFL	LVDS	0~+55	UA-SFT, 72% color gamut	16.77M	Industrial
15"	NL10276BC30-18/18C	XGA 1,024 x 768	500:1 80/80, 80/60	500	CCFL	LVDS	-10~+70	RF + WV, reverse scan	16.77M	Industrial
21.3"	NL160120BM27-03/-03A	UXGA 1,600 x 1,200	700:1 85/85, 85/85	1,000	CCFL	LVDS 10-bit LUT	0 ~ +55	SA-SFT, 2M pixel monochrome, 10-bit LUT	766 grey	Hi-res
21.3"	NL160120BC27-05	UXGA 1,600 x 1,200	450:1 85/85, 85/85	450	CCFL	LVDS	0 ~ +55	SA-SFT, adjustable gamma w/10-bit LUT	16.77M	Hi-res

